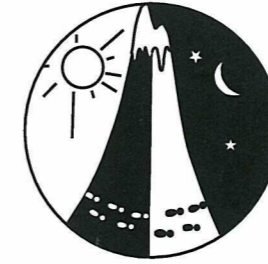


# PHOENIX

## Spring 24hr Rogaine Incorporating the Schools Championships August 29th and 30th 2015



The Western Australian Rogaining Association is supported and sponsored by:



Department of Sport and Recreation



Emergency satellite number +881 622 449700  
Warren Smith 0407 773 697

SCALE 1:50,000



Contour interval - 5 metre

### LEGEND

Building	
Control	
Contours	
Dams	
Hash House	
Magnetic North Lines	
Out of Bounds	
Patrolled Road	
Powerline	
Fence	
Road, Major Gravel	
Road, Minor Gravel	
Road, Continuation	
Watercourse	
Water Drop	

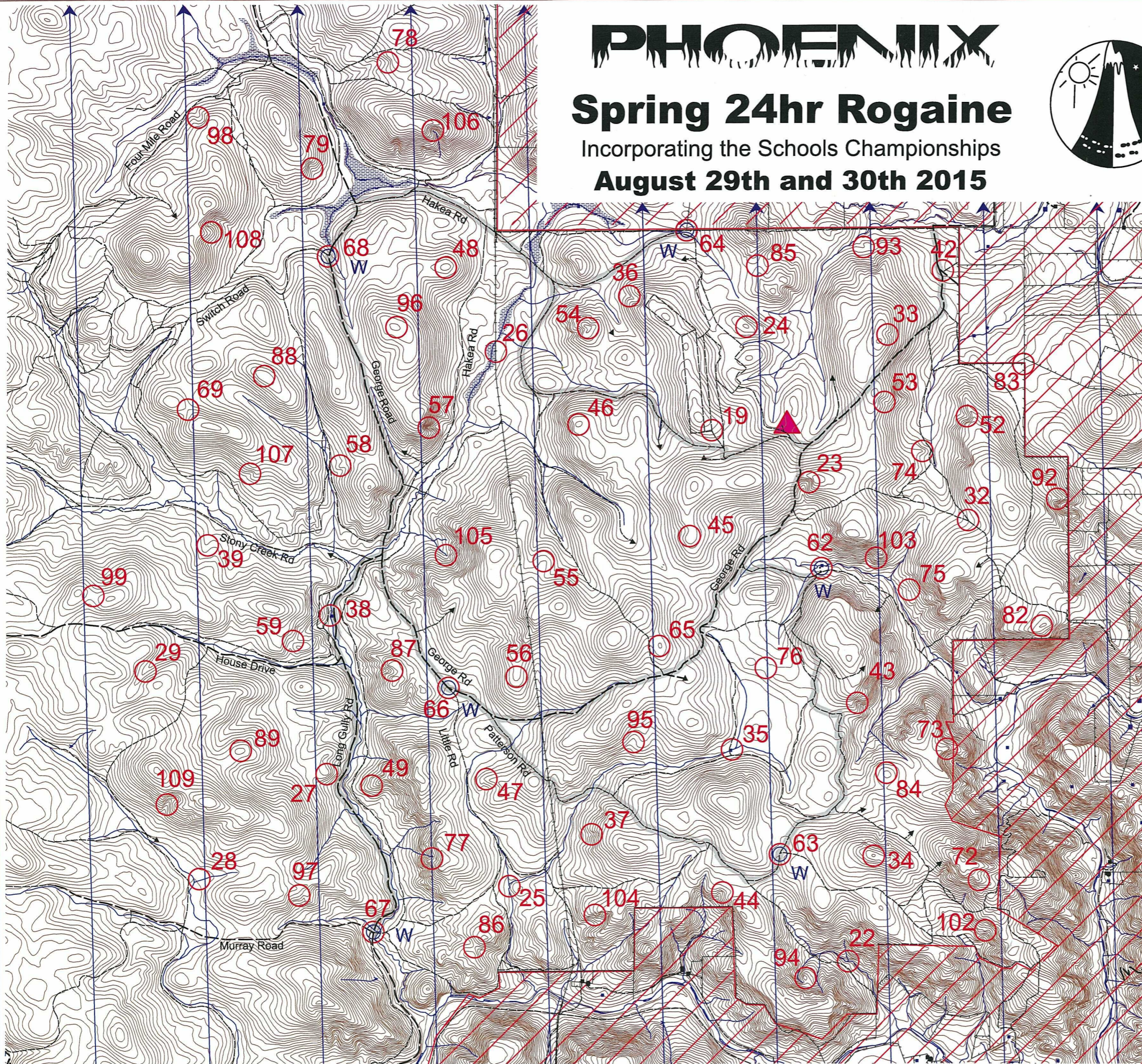
Setters : Ian Thomsett  
John Cresp

Vetters : Wil Williams  
John Williams  
Shane Lewis  
Grant Pepper

This map was produced using OCAD 9 by the Western Australian Rogaining Association. Data supplied by Landgate and used under copy licence 393/93. Possession of this map does not give right of entry to this area.

Western Australian Rogaining Association  
PO Box 1201 Subiaco WA. 6904  
wa.rogaine.asn.au

*Mr Rogaine  
August 2015*



# PHOENIX Spring 24 Hr Rogaine

August 29th and 30th 2015

No.	Description	Points	No.	Description	Points	Important Information
19	The track junction. EP	10	72	The spur - on a rocky outcrop	70	<b>Control Cards</b> From 11:30 Saturday
22	The creek junction - north east side	20	73	The spur	70	
23	The gully EP	20	74	The spur EP	70	<b>Briefing</b> 11:45 Saturday
24	The knoll EP	20	75	A spur	70	
25	A creek bend - east side	20	76	The broad saddle - very open - just south of a fire break	70	<b>Start</b> 12:00 Saturday
26	A power line pylon - south east corner	20	77	A watercourse	70	
27	The spur	20	78	The gully - broad	70	<b>Finish</b> 12:00 Sunday
28	The watercourse junction with an indistinct track	20	79	The gully	70	
29	The gully - broad	20	82	The knoll	80	<b>Hash House</b> Opens at 18:00 Sat. Closes by 13:00 Sun.
32	The track junction	30	83	The forest boundary - north eastern corner	80	
33	The gully EP	30	84	The knoll	80	<b>Sunset</b> 17:57
34	The knoll	30	85	The saddle EP	80	
35	The water hole - north Side	30	86	The saddle	80	<b>Moonrise</b> 17:31
36	The gully	30	87	The gully - head of	80	
37	The gully	30	88	The knoll	80	<b>Moonset</b> 06:38
38	The dam - west side	30	89	The knoll	80	
39	The gully - shallow - on an indistinct track	30	92	The spur	90	<b>Sunrise</b> 06:37
42	The track junction EP	40	93	The gully EP	90	
43	The gully	40	94	The knoll	90	<b>Late Penalty</b> 10 points per minute or part minute.  DSQ if later than 12:30 Sun
44	The gully - head of	40	95	The gully	90	
45	A knoll - southern end	40	96	The knoll	90	<b>Controls Used</b>  73
46	The knoll	40	97	A spur	90	
47	The spur	40	98	The shallow gully	90	<b>Total Points</b> 4330
48	The knoll	40	99	The saddle - broad	90	
49	The spur	40	102	A spur	100	<p><b>Water Drops:</b> At controls 62, 63, 64, 66, 67 and 68</p> <p><b>Electronic punch</b> controls are noted as EP</p> <p><b>Patrol Roads</b> - will be driven along every 2 to 3 hours Look for the green flashing light</p> <p><b>Emergency contact numbers :</b> Satelite phone - 881 662 449 700 Warren Smith - 0407 773 697 Mobile phone coverage is patchy over the area of the map Best reception is obtained from hill tops</p>
52	The gully - head of EP	50	103	The spur	100	
53	The gully EP	50	104	The western gully	100	<p>4330 460 910</p>
54	The knoll	50	105	The watercourse - 50m from the edge of a large open area 200x200m	100	
55	The spur	50	106	The gully - head of	100	
56	The spur	50	107	The gully	100	
57	The gully	50	108	The spur	100	
58	The spur	50	109	The gully	100	
59	The saddle	50				
62	The dam, south side. Near an old bridge. EP Water	60				
63	The track junction Water	60				
64	The fence junction EP Water	60				
65	The knoll EP	60				
66	The road junction - 50m at 50 degrees Water	60				
67	The road junction - 50m at 360 degrees Water	60				
68	The road/track junction 50m at 320 degrees Water	60				
69	The saddle	60				